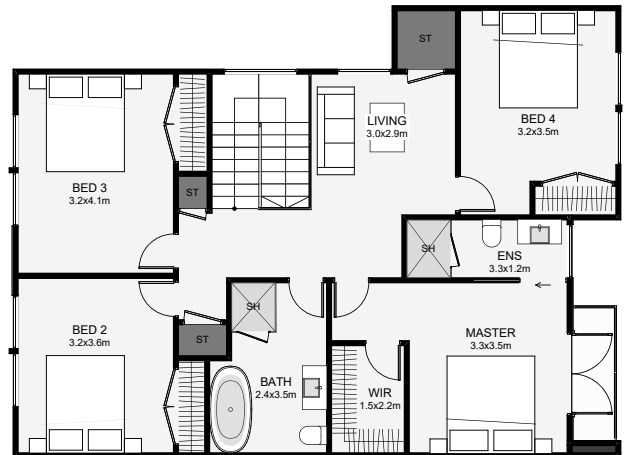
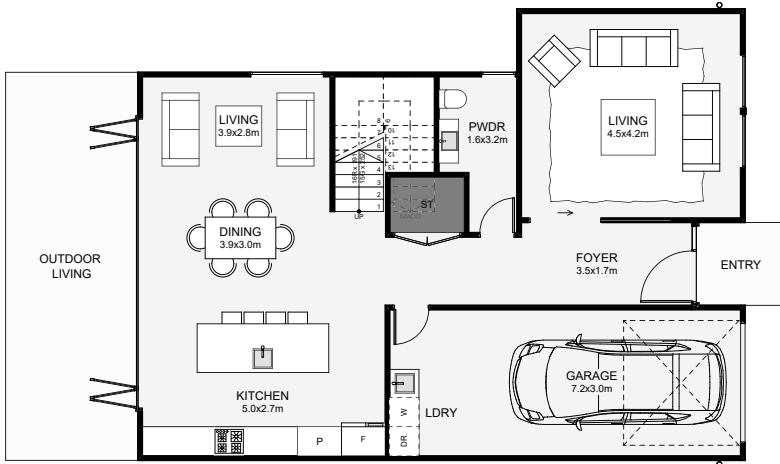




This four-bedroom, brick townhouse is a great low-maintenance choice. Designed to be used either as a standalone townhouse or duplicated as a multi-residence development, this design will have you covered. Inside there are three living spaces, two bathrooms with an extra toilet for guests and plenty of storage, something that's often overlooked in townhouses. With this design its a question of how many do you want to build?



Floor Area: 199m²

 1  4  2.5  3  12.5m  9.3m

Contact Brendon:
Ph: 021 0222 1999
E: info@elementnz.com
www.elementnz.com

