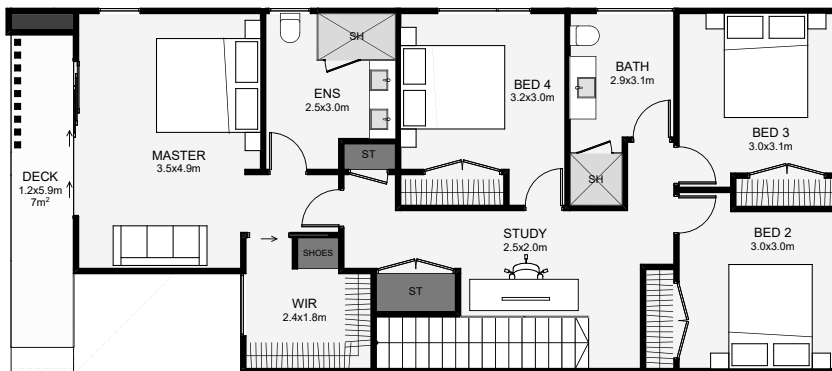
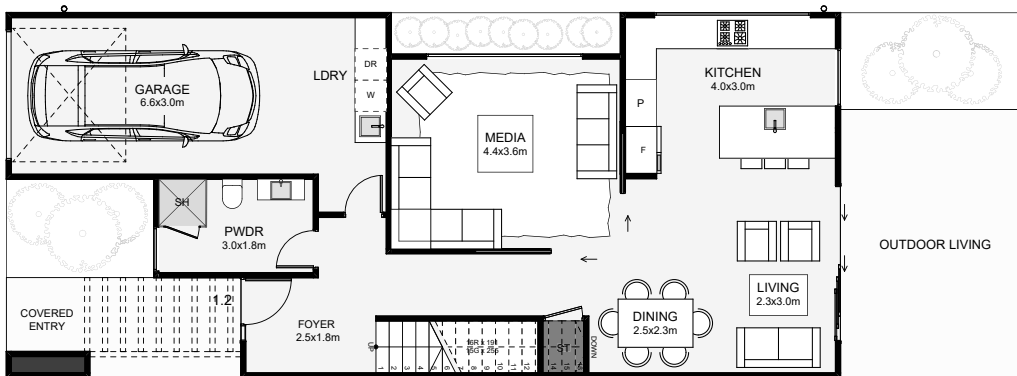




This ultra-modern, four-bedroom townhouse is designed to feel more like a family home. Downstairs, there's dual living, both accessible to the kitchen and a private powder room. Upstairs, is an open study, four bedrooms and two bathrooms. The master enjoys a large walk-in wardrobe, an ensuite and access to a long balcony that will impress! This townhouse has all the design boxes ticked for anyone with modern taste!



Floor Area: 188m²

 1  4  2.5  2  18.0m  7.0m

Contact Brendon:
Ph: 021 0222 1999
E: info@elementnz.com
www.elementnz.com

