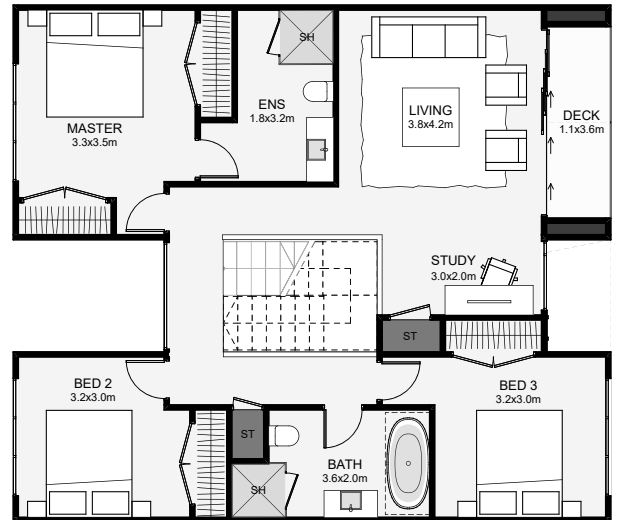
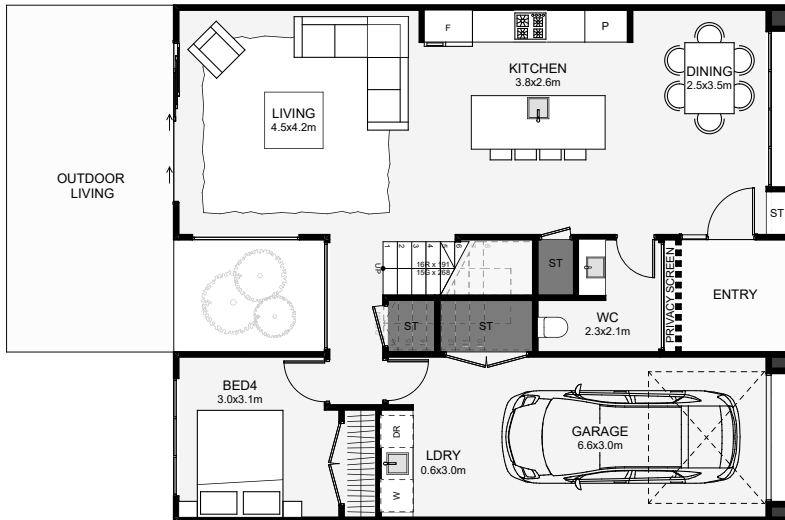




Here's a modern take on the traditional gable townhouse, finished in three claddings that will liven up any street. This four-bedroom design includes dual living, two bathrooms and an extra downstairs toilet, perfect for guests. A northern alcove is designed into this layout for a feature tree, something to be enjoyed inside from both levels. If you're going to build a townhouse, why not make it extraordinary to live in?



Floor Area: 185m²

 1
  4
  2.5
  2
  11.2m
  9.7m

Contact Brendon:
Ph: 021 0222 1999
E: info@elementnz.com
www.elementnz.com

