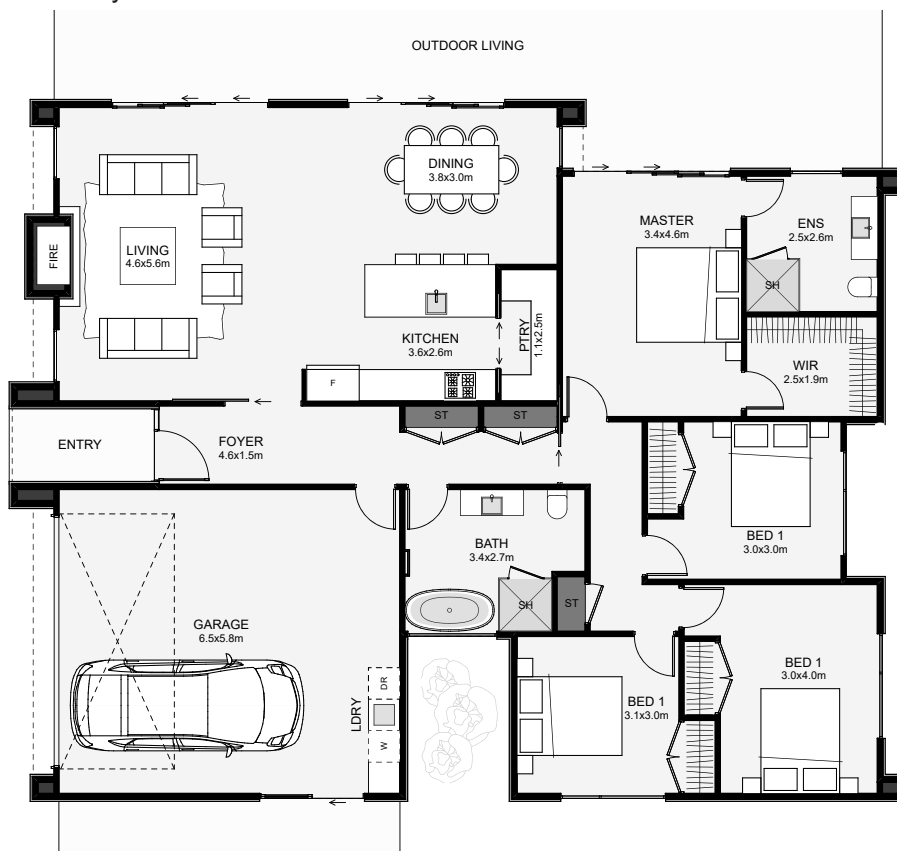




Super modern, sharp lines and a sloping mono-pitch roof, this home cuts through average! Inside, there are four bedrooms, two bathrooms, a large pantry and a built-in fireplace. Metal powder-coated cladding and brick veneer makes for a low-maintenance finish. A nice feature is the bathroom's private garden lookout, where you can install a water feature, maple or palm to take your bath time to the next level!



Floor Area: 192m<sup>2</sup>

2  
 4  
 2  
 1  
 17.0m  
 13.3m

Contact Brendon:  
 Ph: 021 0222 1999  
 E: info@elementnz.com  
[www.elementnz.com](http://www.elementnz.com)

